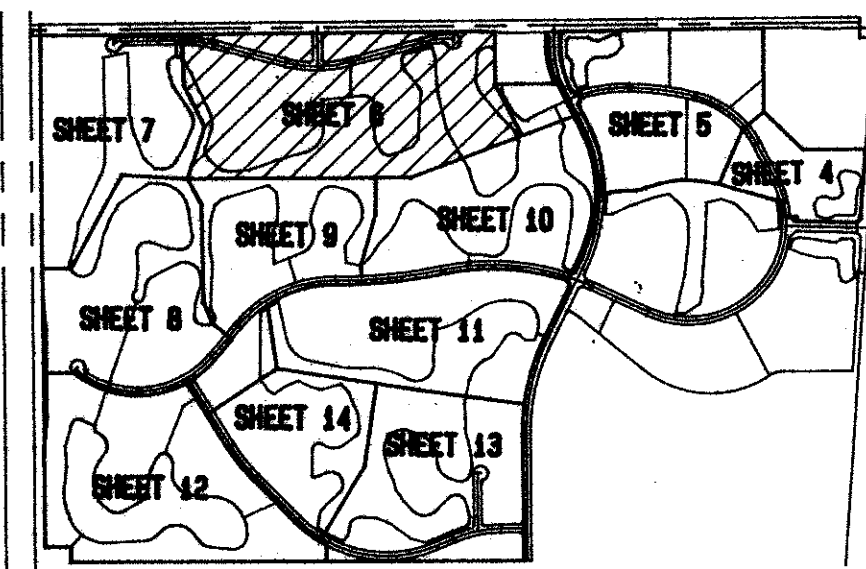
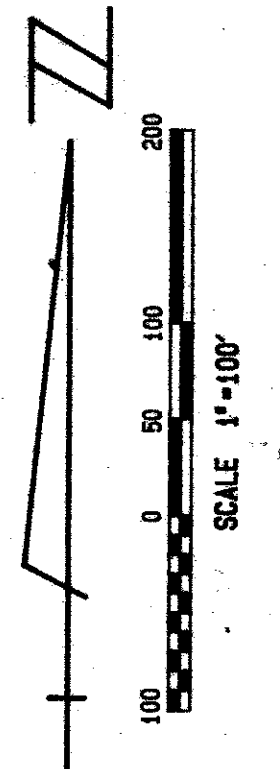


A PART OF LAKE CHARLESTON PLANNED UNIT DEVELOPMENT LAKE CHARLESTON PLAT NO. 3

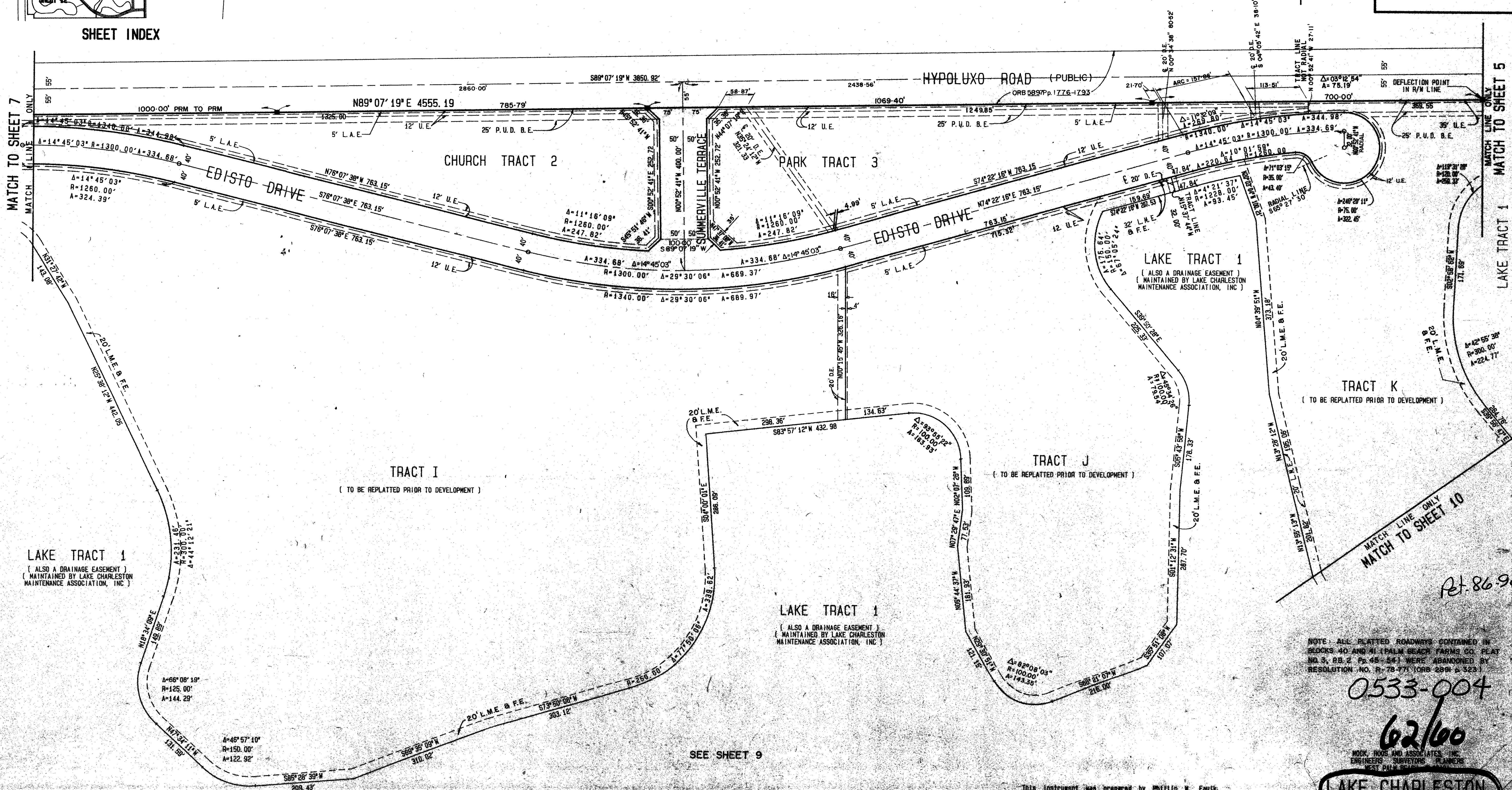
IN 14 SHEETS

SHEET 6

JUNE 1988



SHEET INDEX



Handwritten notes:
62
60
3, 4, 5, 8, 9, 10, 11, 12
R/S
33467
86-94
TR 2 439

Handwritten note: Pt. 86.96

0533-004

62/60

MOCK, ROSS AND ASSOCIATES, INC.
ENGINEERS SURVEYORS PLANNERS
WEST PALM BEACH, FLORIDA
**LAKE CHARLESTON
PLAT NO. 3**

This instrument was prepared by Phillip W. Faulk
in the Offices of Mock, Ross & Assoc., Inc., 5720 Corporate
Way, West Palm Beach, Florida 33407. (407.683-3113)

SEE SHEET 9